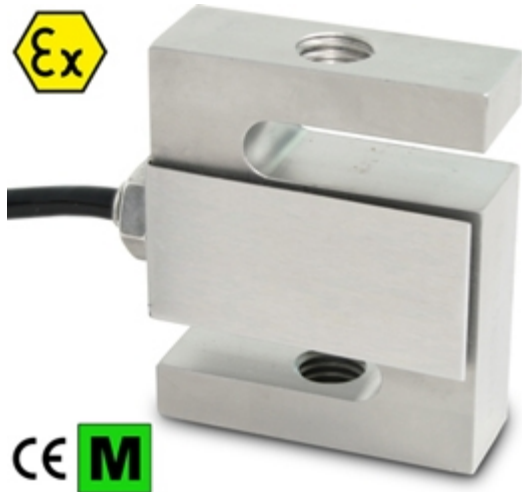


STG

STG SERIES TENSION LOAD CELLS



Tension or Compression approved load cells for the weighing hoppers, tanks, scales with levers, and with other weighing devices.

CAPACITIES (kg): 100, 500, 1000.

17-4 PH stainless steel. IP67 protection. C3 precision class.

The best solution
for advanced industrial
applications

MAIN FEATURES

- C3 PRECISION CLASS
- 17-4 PH STAINLESS STEEL CONSTRUCTION
- IP67 PROTECTION
- MAX. CAPACITIES FROM 100 TO 1000 kg
- SHIELDED CONNECTION CABLE
- TEST CERTIFICATE AVAILABLE UPON REQUEST

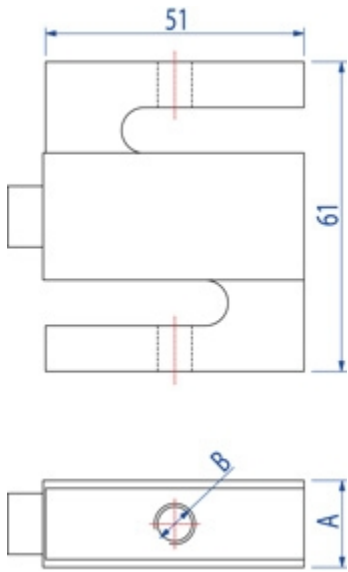
TECHNICAL FEATURES

- Minimum load cell verification interval:
 $V_{min} = E_{Max} / 10.000$ (for STG500 and STG1000 model);
 $V_{min} = E_{Max} / 7.000$ (for STG100 model)
- Maximum number of verification intervals: $n_{LC} = 3000$
- Combined error 0,03% of Full Scale Output (F.S.)
- Non-Repeatability: 0,01% F.S.
- Full Scale Output: 3mV/V +/- 0,08%
- Temperature effect on zero: 0,017% /°C
- Temperature effect on full scale output: 0,014% /°C
- Compensated Temperature Range: -10°C/+40°C
- Operating Temperature Range: -35°C/+65°C
- Creep error after 30 minutes: 0,02% F.S.
- Maximum tolerated excitation voltage: 18 VDC
- Input Resistance: 430 ± 60 Ohm
- Output Resistance: 350 ± 3.5 Ohm
- Zero balance: +/-1% F.S.
- Insulation Resistance: >5000 MOhm
- Safe Overload: 150% F.S.
- Ultimate Overload: 300% F.S.
- 4-wire shielded cable, 6m long, 5 mm diameter

ATEX VERSION

- The CCATEX certificate makes the load cell suitable for use in hazardous areas with protection methods according to:
ATEX II 1G Ex ia IIC T6 (Ta -20÷+40°C) TX (Ta -20÷+65°C) Ga
ATEX II 1D Ex ta IIIC TX°C (Ta -20÷+40°C) TX°C (Ta -20÷+65°C) Da IP65.
The certificate includes the manual and the ATEX CE conformity declaration (available in EN, DE, FR, and IT).
- **IMPORTANT:** the certificate refers to the single load cell. For systems with more load cells, it is necessary to order one certificate for each load cell.

DETAIL 1



Code	Dimensions in mm	
	A	B
STG100	15	M8
STG500	21	M12
STG1000	28	M12

Wiring Code	
<i>Colour</i>	<i>Function</i>
--	SHIELD
GREEN	OUTPUT +
RED	INPUT +
WHITE	OUTPUT -
BLACK	INPUT -

VERSIONS

Models available

Code	Max (kg)
STG100	100
STG500	500
STG1000	1000



www.diniargeo.com



“YOUR WORLDWIDE PARTNER FOR WEIGHING,”

DINI AR GEO
FRANCE sarl
Nogent-sur-Marne
info.fr@diniargeo.com

DINI AR GEO
GMBH
Sinsheim - Germany
info.de@diniargeo.com

DINI AR GEO
UK Ltd
Taunton - United Kingdom
info.uk@diniargeo.com

DINI AR GEO WEIGHING
INSTRUMENTS Ltd
Shanghai - China
info.cn@diniargeo.com

DINI AR GEO
WEIGHBRIDGES
Calto (RO) – Italy
info@diniargeo.com



HEAD OFFICE

Via Della Fisica, 20
41042 Spezzano di Fiorano Modena - Italy
Tel. +39.0536 843418 Fax. +39.0536 843521
info@diniargeo.com

SERVICE ASSISTANCE

Via Dell'Elettronica, 15
41042 Spezzano di Fiorano Modena - Italy
Tel. +39.0536 921784 Fax. +39.0536 926654
service@diniargeo.com

SALES AND TECHNICAL ASSISTANCE SERVICE