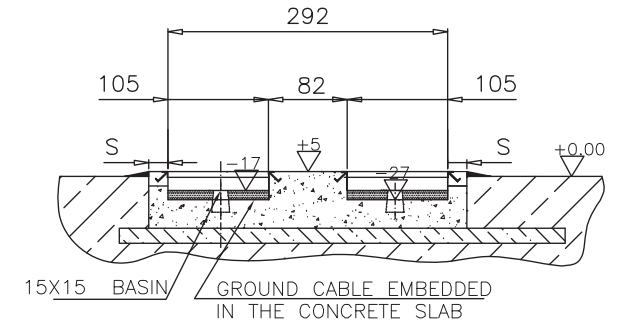
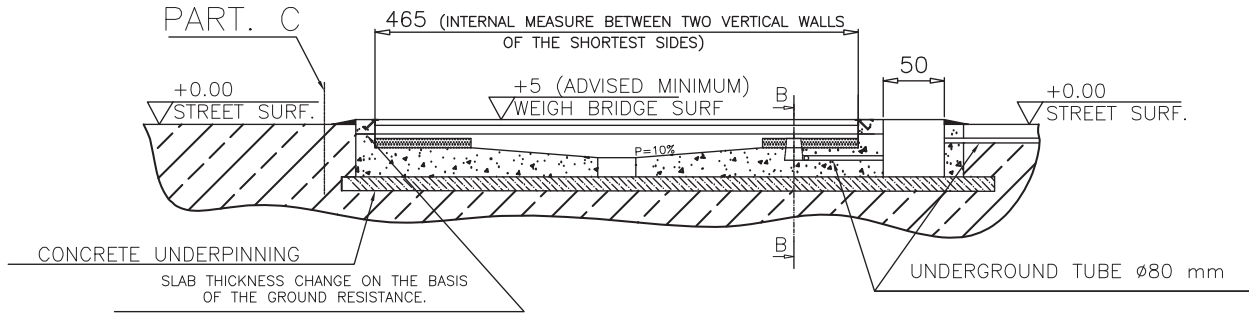
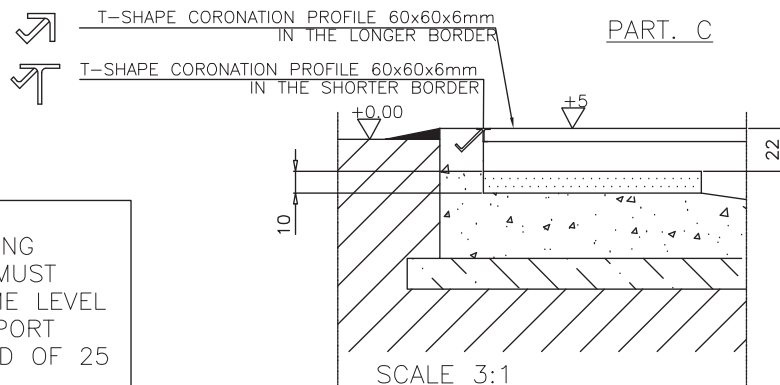
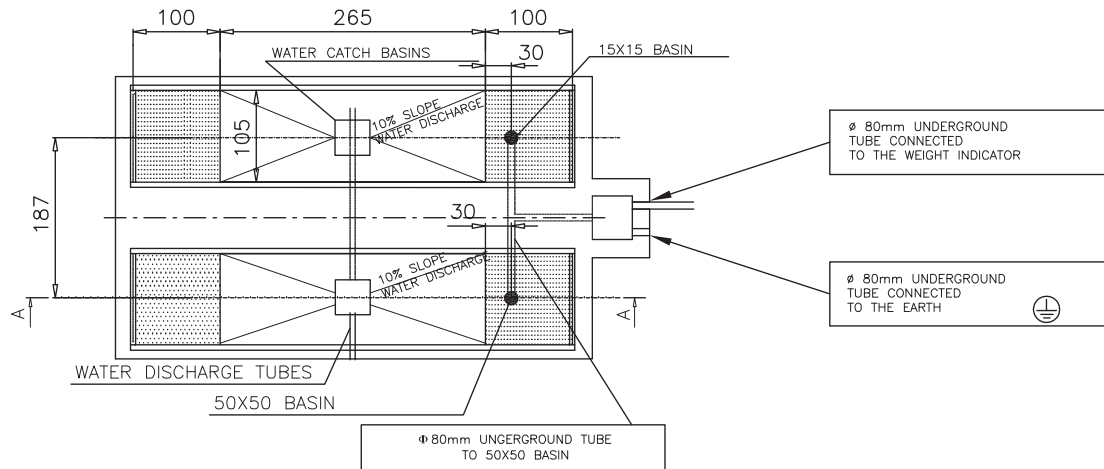


SEC. A-A



SEC. B-B



N.B.
PLATFORM RESTING
PILLARETS ALL MUST
BE ON THE SAME LEVEL
AND MUST SUPPORT
A VERTICAL LOAD OF 25
TONS
AND A HORIZONTAL LOAD
OF 7 TONS.

THE FOLLOWING ARE NOT SUPPLIED:
-STATIC CALCULATION OF BEDPLATE AND MASONRYWORK
-ELECTRIC AND GROUNDING SYSTEM
-CATCH BASINS AND CANALIZATIONS
-PLATES AND PIT FRAME

QUOTE SENZA TOLL. UNI 01/22768-1		DIMENSIONE												
		0-3	3-6	6-30	30-200	200-400	400-1000	1000-2000	2000-4000	4000	0-10	10-50	50-120	120
GRASSO		+2	+3	+5	+6	+12	+2	+3	+4	+5	+30	+1	+1	+30
MEDIO		+1	+1	+2	+3	+5	+5	+12	+2	+2	+1	+1	+1	+15
PRECISO		+0,5	+0,5	+1	+1,5	+2	+3	+5	-	-	+1	+1	+1	+10

DATA	MODIFICA	DATA-DATE	DISEGN-DRAWED	APPROV-APPROVED	SCALA-SCALE	FDGID-SHEET
		02/04/15	F.I.	AM	1:1	A3

REV. DIS.	DESCRIZIONE	NOTE	CODICE CAD CODE	CODICE CODE
	DINI ARGO	Bilance Sistemi per pesare		1354F217 R2

FOR ANY CHANGE TO THIS SCHEME,
PLEASE CONTACT OUR TECHNICAL
OFFICE (REF. ANDREA BERTONI)

