

# Stainless Steel Anti-Vibration Tables

Stability and repeatability of measurements due to minimization of ground vibrations.



SAL/C, SAL/C/PLUS



SAL/T



SAL/H, SAL/H/PLUS



SAP/C



SAP/H

## Features

### Various Applications

The weighing tables are intended for operation in industry and laboratory.

### Base Temperature

Granite top ensures stable temperature of the base and the highest accuracy and repeatability of measurements.

### Anti-Vibration Construction

Stone top, embedded in the table made of stainless steel or chipboard, enables stabilization of the ground. This increases the accuracy and repeatability of measurements.

## Compatible with

### SAL/C, SAL/H:

- UYA 4Y ultra-microbalances
- MYA 4Y microbalances
- XA 4Y microbalances
- XA 4Y; AS 3Y, X2, R analytical balances,
- PS 3Y; PM 4Y, C32 precision balances,
- PMV moisture analyzers,
- MA 3Y, X2, R moisture analyzers,
- MAS, MPS, MU YA modules

### SAL/C/PLUS, SAL/H/PLUS:

- XA 4Y.A PLUS microbalances
- XA 4Y.M.A PLUS analytical balances

### SAL/T:

- AS 3Y analytical balances
- PA-04/H automatic feeders

### SAP/C, SAP/H:

- PM 4Y, PM C32 precision balances
- WPT/H, WPT/HR platform scales
- Stainless steel TMX H, HY10 multifunctional scales
- TMX, WPW multifunctional scales
- Waterproof WPW/T/H/FH, WPW/T/HR/FH control scales

## Set Content

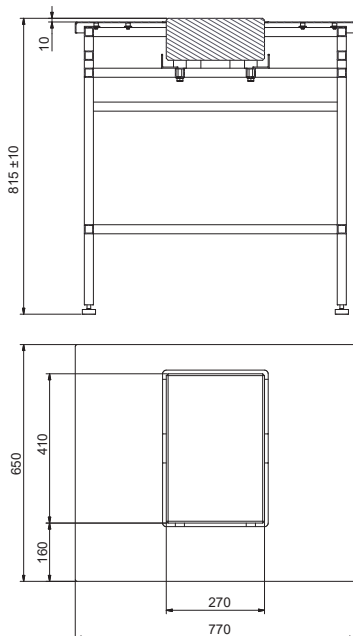
- Work table
- Marble top

## Technical Specifications

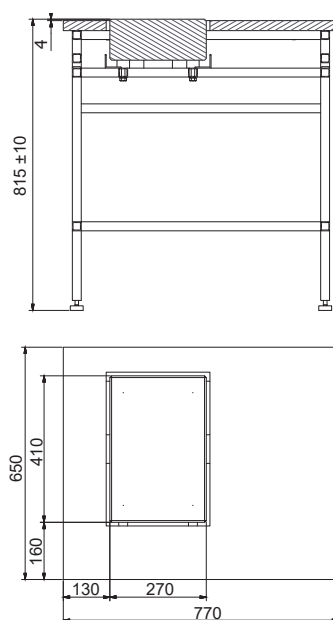
	SAL/C, SAP/C, SAL/T	SAL/H, SAP/H
<b>Length</b>	770 mm	770 mm
<b>Width</b>	650 mm	650 mm
<b>Height</b>	815 mm ± 10 mm	815 mm ± 10 mm
<b>Stabilizing plate thickness</b>	115 mm	115 mm
<b>Load-bearing capacity</b>	40 kg	40 kg
<b>Material</b>	construction: powder coated steel top: HPL board stabilizing plate: granite stone slab	construction: stainless steel top: stainless steel stabilizing plate: granite stone slab
<b>Net / gross weight</b>	55 - 60 kg / 65 - 70 kg	55 - 60 kg / 65 - 70 kg
<b>Packaging dimensions</b>	800x600x820mm + case for granite stone slab 315x455x165mm	800x600x820mm + case for granite stone slab 315x455x165mm

	SAL/C/PLUS	SAL/H/PLUS
<b>Length</b>	770 mm	770 mm
<b>Width</b>	650 mm	650 mm
<b>Height</b>	815 mm ± 10 mm	815 mm ± 10 mm
<b>Stabilizing plate thickness</b>	115 mm	115 mm
<b>Load-bearing capacity</b>	40 kg	40 kg
<b>Material</b>	construction: powder coated steel top: HPL board stabilizing plate: granite stone slab	construction: stainless steel top: stainless steel stabilizing plate: granite stone slab
<b>Net / gross weight</b>	55 - 62 kg / 66 - 70 kg	55 - 62 kg / 66 - 70 kg
<b>Packaging dimensions</b>	800x600x820mm + case for granite stone slab 365x455x165mm	800x600x820mm + case for granite stone slab 365x455x165mm

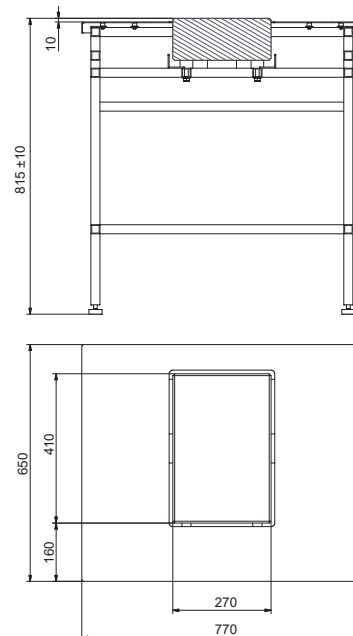
## Dimensions



SAL/C

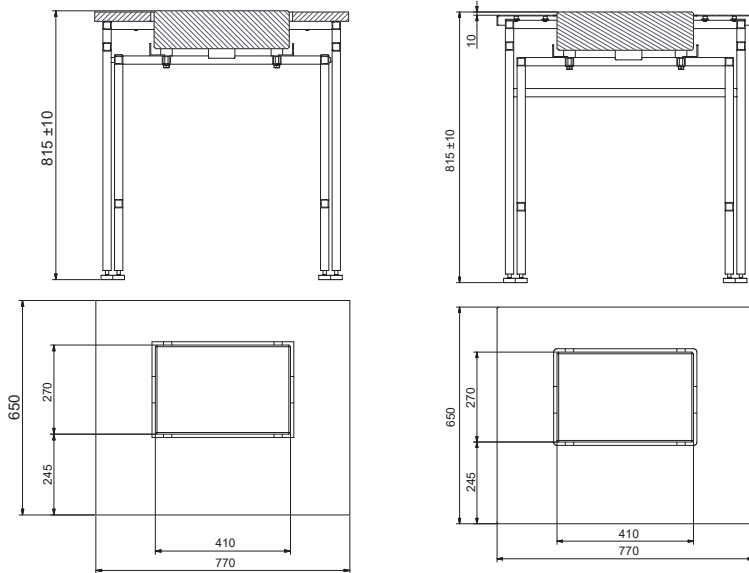


SAL/T



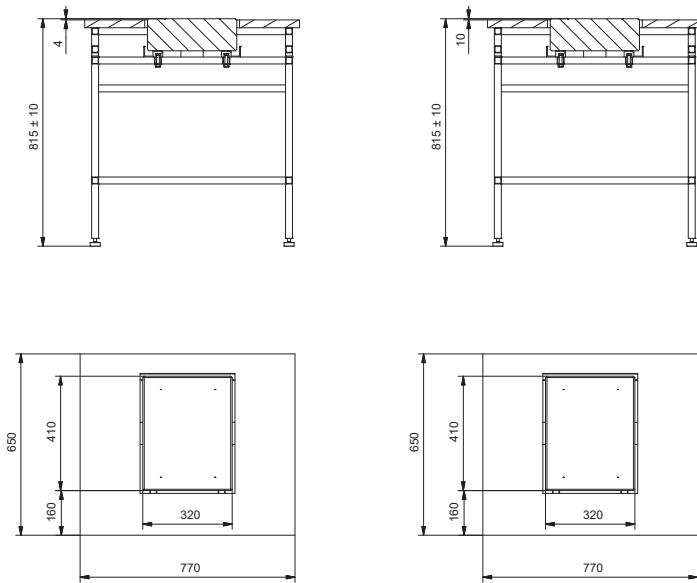
SAL/H

# Dimensions



**SAP/C**

**SAP/H**



**SAL/C/PLUS**

**SAL/H/PLUS**