

Configure your PIN and receive a personalized quotation. You must fill in all the gaps.

Contact information

Company name

COUNTRY

Email

Contact name

Phone No.

Web

Nominal load

t

Quantity (units)

Measures

A

mm

B

mm

C

mm

D

mm

EØ<sub>1</sub>

mm

F

mm

G

mm

H

mm

I

mm

J

mm

K

mm

M

1x45

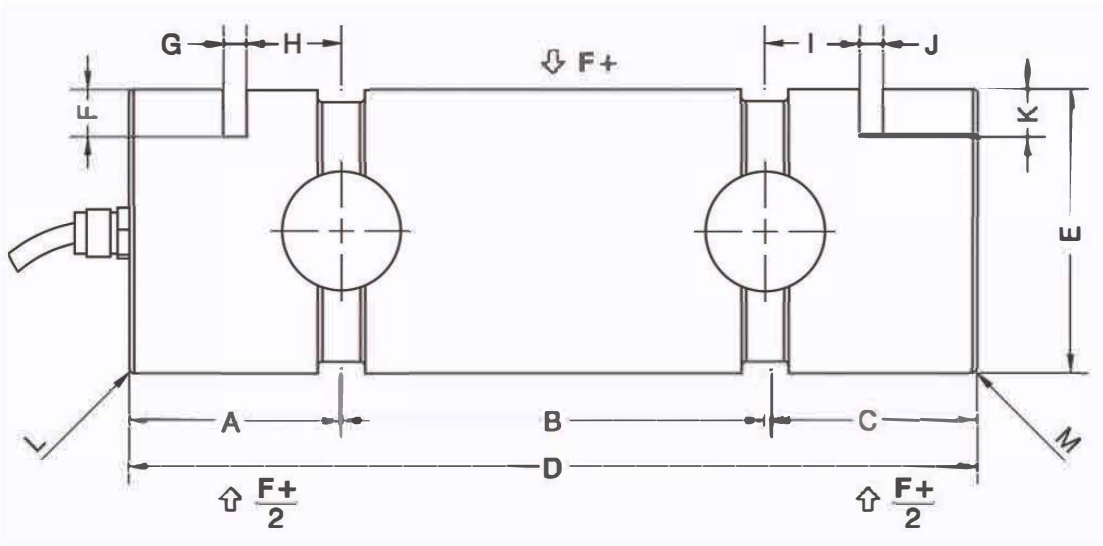
mmx°

L

1x45

mmx°

<sub>1</sub> Tolerance of +0.00 / -0.05 mm. Unless expressly requested



Specifications

Material Stainless steel

Nominal sensitivity

☒ 1± 0,25% mV/V

☐ Other  mV/V (recommended from 0,5 to 1,5 mV/V)

Cable arrangement & operating temperature

- ☐ Fixed cable -20°C to +90°C
- ☐ Connector (base male and aerial female) -20°C to +90°C
- ☐ High Temperature fixed cable -20°C to +180°C
- ☐ High Temperature connector (base male and aerial female) -20°C to +150°C

Cable length

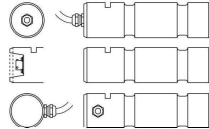
- ☐ 5m
- ☐ 10m
- ☐ 15m

☐ Other

m

Cable exit position

- ☐ Axial
- ☐ Axial Recessed
- ☐ Radial



Output

- ☐ mV/V
- ☐ Amplified output 4/20 mA (standard: 4mA = 0 load; 20mA = nominal load)
- ☐ Amplified output 0/10 V (standard: 0V = 0 load; 10V = nominal load)

Forces application

- ☐ As shown in the drawing
- ☐ Different arrangement (please provide a drawing)

Ingress Protection (IP)

- ☐ IP66 Dust-tight, protected against water jets
- ☐ IP68 Dust-tight, protected against the effects of immersion in water (standard 1m, 100h)

Redundant output

- ☐ NO
- ☐ YES, 2 sensor system, independent of each other. Output 1 cable of 8 wires.
- ☐ YES, 2 sensor system, independent of each other. Output 2 cable of 4 wires.

Lubrication holes

- ☐ NO
- ☐ YES (please provide a drawing)

ATEX

- ☐ NO
- ☐ YES

IECEX

- ☐ NO
- ☐ YES

Material certificate according EN10204 3.1

- ☐ NO
- ☐ YES

Brief application description or extra information needed needed