

KSBN

Assembly kits in nickel-plated steel "KSBN" series for SBX/SBK shear beam load cells



Assembly kits for shear beam load cells SBX/SBK series up to 2500kg, suitable for hoppers, tanks, platforms, etc.

ADVANTAGES:

- Structure in nickel-plated steel.
- Easy and fast assembly.
- Upper plate with spherical joint for excellent measuring accuracy.
- Height adjustment for a correct leveling.

Working in cooperation with:

VETEK AB

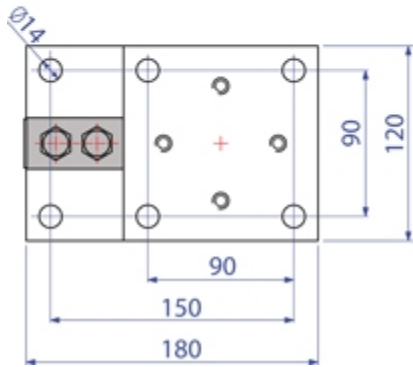
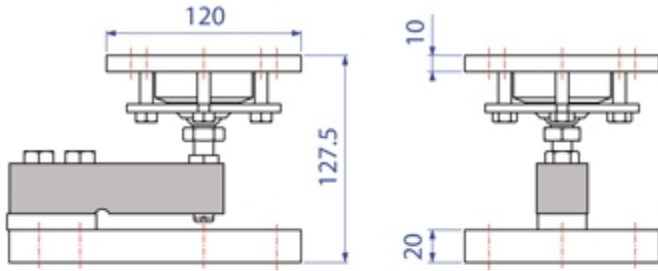
HANTVERKSVÄGEN 15 - 76493 - VÄDDÖ - SWEDEN
Tel. +46176-208920, info@vetek.com, www.vetek.com

**The best solution
for advanced industrial
applications**

MAIN FEATURES

- MANUFACTURED IN GALVANIZED STEEL
- OSCILLATING SPHERICAL JOINT
- MECHANICAL COMPENSATION OF THERMAL SWELLINGS AND TRANSVERSAL FORCES
- EASY TO INSTALL
- GUARANTEES THE MAXIMUM PRECISION OF THE LOAD CELL.

DETAIL 1



Dimensions in mm



www.diniargeo.com



“YOUR WORLDWIDE PARTNER FOR WEIGHING,”

DINI ARGEO
FRANCE sarl
Nogent-sur-Marne

DINI ARGEO
GMBH
Sinsheim - Germany

DINI ARGEO
UK Ltd
Taunton - United Kingdom

DINI ARGEO WEIGHING
INSTRUMENTS Ltd
Shanghai - China

DINI ARGEO
WEIGHBRIDGES
Calto (RO) – Italy



HEAD OFFICE
Via Della Fisica, 20
41042 Spezzano di Fiorano Modena - Italy



VETEK AB

HANTVERKSVÄGEN 15 - 76493 - VÄDDÖ - SWEDEN

Tel. +46176-208920, info@vetek.com, www.vetek.com

SALES AND TECHNICAL ASSISTANCE SERVICE