

Model SSC

STAINLESS STEEL COMPRESSION LOAD CELL



The SSC (Stainless Steel Compression) load cell is available in 6 capacities, 5t to 100t.

This load cell continues to be an industrial workhorse within the weighing industry. A natural choice for high capacity hopper, tank and silo weighing, where long life and stability are pre-requisites.

It is an excellent selection for many hostile environments due to its welded heavy-duty stainless steel construction and high weighing capacity, coupled with a quality IP67 protection rating.

The special mounting accessories make the SSC an ideal choice for the professional weighing installer, using our simple top & bottom mount Type 3, side adjustable restraining mount Type 1 or the unique side & uplift restraining mount Type 2 all provide for a simple 'set and forget' installation.

Three standard mountings are available to be sure you gain the maximum performance by using one of the special PT designed and manufactured mounting kits.

APPLICATIONS

- Hopper, tank & silo weighing
- High capacity weighing
- Industrial process weighing in most hostile environments

FEATURES

- Heavy duty stainless steel encapsulation
- Industry standard size and shape
- Designed to meet the high capacity markets from 5t ~ 100t
- High overload capacity
- 3 purpose designed installer friendly mounting accessories

Specifications

Note: All specifications are a maximum, as a % (\pm) of full load, unless otherwise stated.

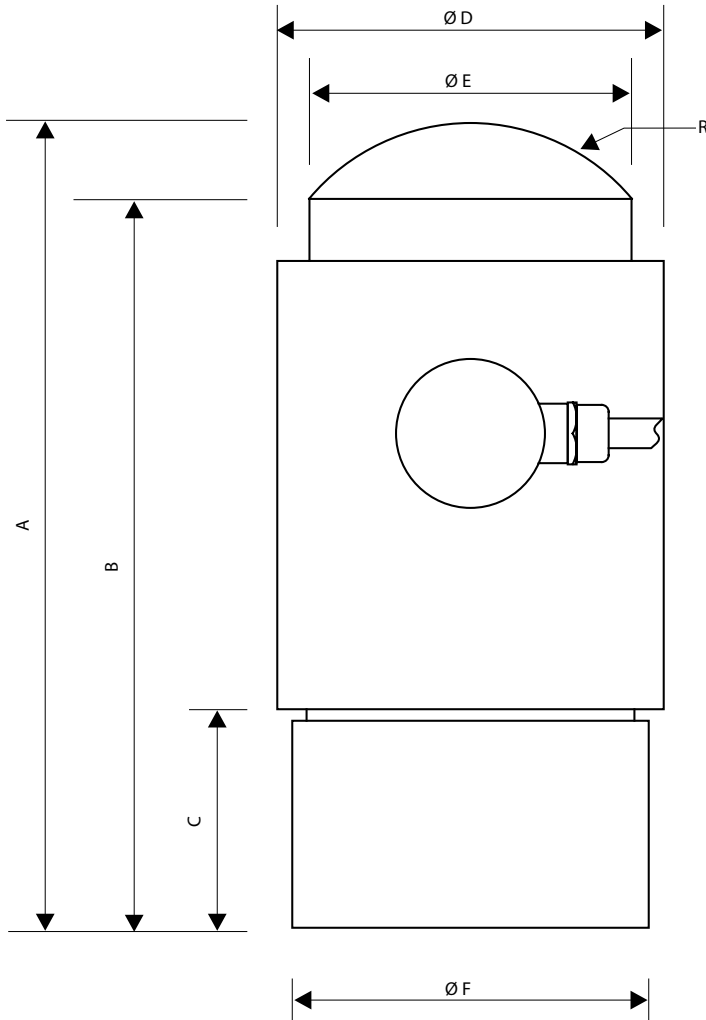
Nominal Capacity	5t ~ 100t	Ultimate Load	500% of Rated Capacity
Signal Output at Capacity	1mV/V \pm 0.1%	Input Resistance	820 Ω Nominal
Linearity Error	< 0.050% FSO	Output Resistance	705 Ω Nominal
Non-Repeatability	< 0.020% FSO	Insulation Resistance (bridge to ground)	> 5000 M Ω at 100V DC
Combined Error	< 0.070% FSO	Excitation Voltage (Recommended)	5 ~ 20V AC/DC
Hysteresis	< 0.020% FSO	Excitation Voltage (Maximum)	25V AC/DC
Creep/Zero Return (30 mins)	< 0.045% / 0.030% FSO	Tilt (Maximum Transverse Displacement)	12mm
Zero Balance	< 2.000% Capacity	Storage Temperature Range	-50 ~ 65°C
Temperature Effect on Span/10°C	< 0.025% FSO	Cable Type	6.5mm, Screened, PUR Sheath 6 Core x 0.24mm ² (24 AWG)
Temperature Effect on Zero/10°C	< 0.025% Capacity	Cable Length	10 Metres (5t ~ 50t) 13 Metres (100t)
Compensated Temperature Range	-10 ~ 50°C	Material	Stainless Steel
Operating Temperature Range	-30 ~ 65°C		
Service Load	100% of Rated Capacity		
Safe Load	200% of Rated Capacity		



Ordering Information

A full range of optional accessories is available, please contact us for further details. Detailed dimension drawings for the accessories are available at our web site.

MODEL	Part Number	ACCESSORIES	Part Number	CABLE PACKS	Part Number		
SSC-5t	SSM500S000XXX	5t ~ 20t	30t ~ 50t	100t	Junction box to indicator runs. Available by the metre.		
SSC-10t	SSM010TS000XXX	Type 1	M-SSC1-20	M-SSC1-50	N/A	10 Metres	A-6C6.5-0010
SSC-20t	SSM020TS000XXX	Type 2	M-SSC2-20	M-SSC2-50	N/A	50 Metres	A-6C6.5-0050
SSC-30t	SSM030TS000XXX	Type 3	M-SSC3-20	M-SSC3-50	M-SSC3-100	100 Metres	A-6C6.5-0100
SSC-50t	SSM050TS000XXX					Cable Joint Kit	A-CAB-JOINTSTD
SSC-100t	SSM100TS000XXX						



Load Cell Dimensions

	5t	10t	20t	30t	50t	100t
A	138.5	138.5	138.5	138.5	138.5	200
B	120.5	120.5	120.5	120.5	120.5	168
C	33	33	33	33	33	53
D	76	76	76	90	90	114
E	38	38	38	54	54	76
F	70	70	70	70	70	105
G	0.2	0.2	0.9	1.2	1.2	1.6
R	15	15	15	35	35	50
Weight	3.3	3.3	3.4	3.6	3.6	11.5

Dimensions in mm Weight in kg
G = Full Load Deflection

Accessories

PT Cable Colour Code

Excitation	+ve	Red
Sense	+ve	Brown
Excitation	-ve	Black
Sense	-ve	Blue
Signal	+ve	Green
Signal	-ve	White

