

DGT4X

DGT4X - HIGH SPEED 4-CHANNEL WEIGHT TRANSMITTER



4-channel weight transmitter for weight transfer to PLC via fieldbus, analog output or RS485. It allows the reading and diagnostics of each load cell or each connected scale.

Available versions:

PROFINET I/O | ETHERNET/IP | ETHERCAT |
MODBUS TCP | CANOPEN | DEVICENET |
PROFIBUS | ANALOG OUTPUT | RS485

Integrated WebServer as standard for
configuration, diagnostics and data backup.

Working in cooperation with:

VETEK AB

HANTVERKSVÄGEN 15 - 76493 - VÄDDÖ - SWEDEN
Tel. +46176-208920 , info@vetek.com, www.vetek.com

The best solution
for advanced industrial
applications

What's new compared to DGT4

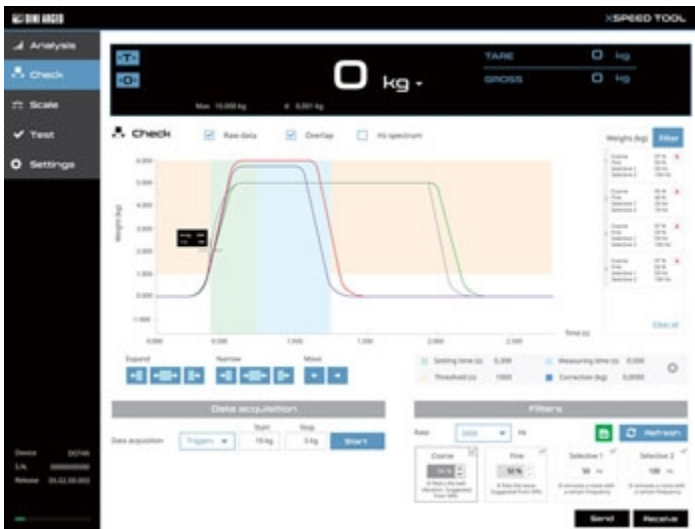
- New cutting-edge processor, able to process up to 2600 weight readings per second. The high speed allows an extremely accurate weight filtering even with weighing times in the order of milliseconds.
- New cell feed circuit for greater weighing stability.
- Power supply circuit with protections, specific for industrial environments.
- Removable terminal blocks to simplify wiring in the electrical panel.
- Frontal micro-USB communication port for configuration, diagnostics and data backup.
- XSPEED TOOL: New PC software with oscilloscope function for system diagnostics and weighing filter optimization.
- 14.2 mm display.
- New configuration menu to simplify calibration and configuration.
- RS485 communication port always available on all versions.
- Up to 120 fieldbus updates per second.

ONBOARD WEB SERVER

- The integrated WEB SERVER allows complete diagnostics, calibration and remote configuration of the weight transmitter from the Ethernet network.
- *Only for PROFINET, ETHERNET/IP and MODBUS TCP/IP models.*

PC XSPEED TOOL SOFTWARE

- Specific program for PC, designed to improve the performance of any weighing system.
- Customization of the weighing filter, to maximize the speed and accuracy of the weighs in static and dynamic applications.
- Graphical weighing analysis for the identification of mechanical disturbances and vibrations.



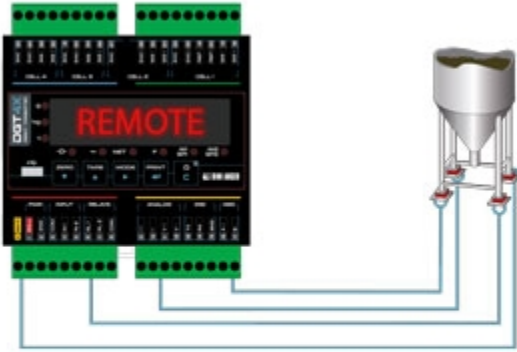
TECHNICAL FEATURES

- Power supply: 12-24Vdc
- Converter: A/D 24 bit with 4 channel
- Max scale number: 4
- Load cells connection: 4 or 6 wires (with sense)
- Operating modes:
 - Digital junction box
 - Multi-scale transmitter
 - Single-scale transmitter
- Conversion rate: up to 3200 conv./sec
- Selectable sampling rate: up to 2600 conv./sec
- Fieldbus update rate: up to 120 Hz
- Displaying: up to 1.000.000d
- Signal sensitivity: 0,03 $\mu\text{V/d}$ (0,3 $\mu\text{V/e}$)
- Resolution: 3.000.000 counts
- Linearization: up to 8 points
- Connectable load cells: up to 16 350 Ω cells
- Fieldbus: Profibus, Profinet, EthernetIP, EtherCAT, EthernetIP, CANopen, DeviceNet, Modbus TCP/IP.
- Serial ports:
 - 1 Micro-USB port (device) for PC configuration with "Dinitools®" and "XSpeed Tool".
 - 1 RS485 port
 - 1 RS232 port (Mod. DGT4X / DGT4XAN)
- Analog output: 16 bit (DGT4XAN Model) 4-20mA or 0-10Vdc.
- Digital outputs: n. 2 configurable OUTPUTS
- Digital inputs: n. 2 configurable INPUTS
- Certifications:
 - OIML R76 (10000e or 3000 + 3000e) / R51 / R61 MID
 - UL Listed (upon request)
 - EU Type Examination Certificate (45501:2015)
- Case: ABS, for Din bar (106 x 56 x 118 mm)
- Calibration:
 - Theoretical (mV\V)
 - With sample weights
 - Remotely by WEB SERVER
 - From the keyboard
 - From PC with "Dinitools"
- Keyboard functions:
 - Zeroing, Tare, Function mode, Manual data printing/sending, ON/Stand-by
- Program functions:
 - Setpoint, High resolution, Peak, Alibi Memory, Unit of measure conversion
- Keyboard: mechanical with 5 digits
- Display: 14,2mm red LED

DETAIL 1



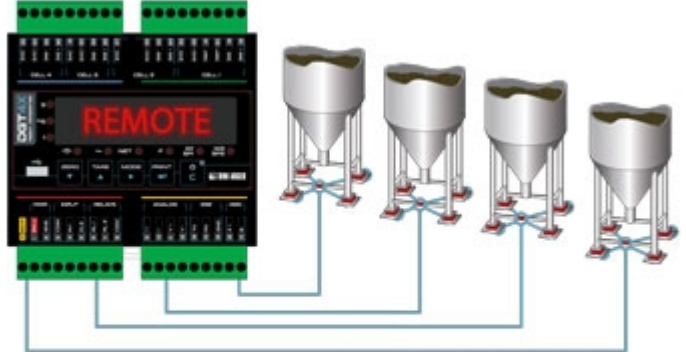
DIGITAL EQUALISATION BOX MODE



DETAIL 2



4 SCALES MODE



DETAIL 3

Home Sign out Change password Network 1.3

Profile	Value	Unit	Max	Min	Unit	Status	
ID	508	NET	508	0	kg	-H- LS CL INT INT OUT1 OUT2	ZERO SAVE

ADC: none

PARAMETERS	CALIBRATION	COMMANDS
Unit: kg Decimals: 0 Capacity 1: 10000 Capacity 2: 0 Division 1: 1 Division 2: 1	Cal points: 1 Zero: 0 Point 1: 10000, Weight: 2147184, ADC: 0 Point 2: 0, ADC: 0 Point 3: 0, ADC: 0	KEYBOARD LOCK KEYBOARD UNLOCK SCALE REBOOT WRITE PARAMETERS WRITE SETPOINTS

SETPOINTS

Setpoint 1 on	
Setpoint 1 off	
Setpoint 2 on	
Setpoint 2 off	



www.diniargeo.com



“YOUR WORLDWIDE PARTNER FOR WEIGHING,”

DINI ARGEO
FRANCE sarl
Nogent-sur-Marne

DINI ARGEO
GMBH
Sinsheim - Germany

DINI ARGEO
UK Ltd
Taunton - United Kingdom

DINI ARGEO WEIGHING
INSTRUMENTS Ltd
Shanghai - China

DINI ARGEO
WEIGHBRIDGES
Calto (RO) – Italy



HEAD OFFICE
Via Della Fisica, 20
41042 Spezzano di Fiorano Modena - Italy



VETEK AB

HANTVERKSVÄGEN 15 - 76493 - VÄDDÖ - SWEDEN

Tel. +46176-208920, info@vetek.com, www.vetek.com

SALES AND TECHNICAL ASSISTANCE SERVICE