

KST

JOINTS FOR TENSION LOAD CELLS



Joint kits for STG and STFC series tension load cells, suitable for suspended loads weighing.
Installed at the two ends of the cell, the joints assure the correct functioning in accordance with the directives for the cells installation.

Working in cooperation with:

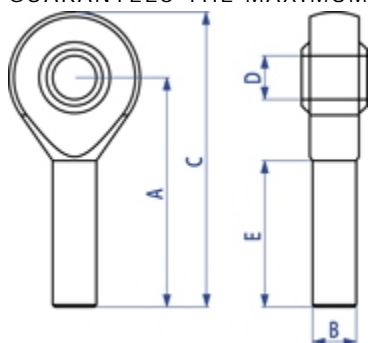
Vetek AB

Hantverkarsvägen 15 - 76493 - Vaddö
Tel. +46176-208920, info@vetek.com, www.vetek.com

The best solution
for advanced industrial
applications

KST1 and KST2: KIT FOR STG SERIES LOAD CELLS

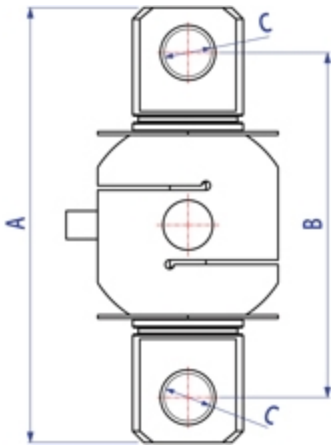
- EXECUTION IN GALVANIZED STEEL
- OSCILLATING SPHERICAL JOINT
- COMPENSATION OF THE TENSION FORCES
- EASY TO INSTALL
- GUARANTEES THE MAXIMUM PRECISION OF THE LOAD CELL.



Code	Dimensions in mm				
	A	B	C	D	E
KST1	42	M 8	53	Ø 8	27
KST2	54	M 12	69	Ø 12	32

KST3 and KST4: KIT FOR STFC SERIES LOAD CELLS

- EXECUTION IN GALVANIZED STEEL
- COMPENSATION OF THE TENSION FORCES
- EASY TO INSTALL
- GUARANTEES THE MAXIMUM PRECISION OF THE LOAD CELL.



Code	Dimensions in mm		
	A	B	C
KST3	193	153	Ø 21
KST4	223	167	Ø 28



ATTENTION



- The KST kits are designed for allowing the correct functioning of the cells and for obtaining the requested weighing accuracy, but does not give protection to the cell and neither to the structure.
- The system designer and installer is obliged to search for the best solutions against lateral forces, capsizing, and overload taking into consideration the:
 - knocks and vibrations;
 - wind shear;
 - seismic classification of the installation area;
 - support base consistence.

DETAIL 1



KST3 and KST4: kit for STFC series load cells



www.diniargeo.com



DINI AR GEO
FRANCE sarl
Nogent-sur-Marne

DINI AR GEO
GMBH
Sinsheim - Germany

DINI AR GEO
UK Ltd
Taunton - United Kingdom

DINI AR GEO WEIGHING
INSTRUMENTS Ltd
Shanghai - China

DINI AR GEO
WEIGHBRIDGES
Calto (RO) - Italy



HEAD OFFICE
Via Della Fisica, 20
41042 Spezzano di Fiorano - Modena - Italy



Vetek AB

Hantverksvägen 15 - 76493 - Vaddö

Tel. +46176-208920, info@vetek.com, www.vetek.com

SALES AND TECHNICAL ASSISTANCE SERVICE