

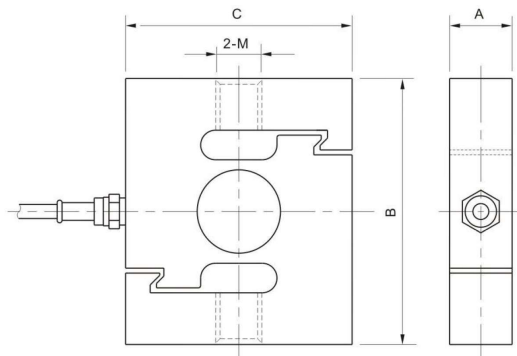
# VZ101BH-20T



## LOAD CELL

Materials: Alloy Steel

S type load cell, tension and compression  
 Good output symmetry, compact structure, overload protected,  
 high security  
 Simple to install, full range of capacities  
 Suitable for electromechanical scale, crane scale, hopper scale  
 and various special scales.



## Specifications

Rated Output(mV/V)	2.00±0.005 3.00±0.005
Nonlinearity	±0.02%FS
Hysteresis	±0.02%FS
Repeatability	±0.01%FS
Creep(30minutes)	±0.02%FS
Zero Balance	±1.00%FS
Temperature Effect on Zero	±0.02%FS/10°C
Temperature Effect on Output	±0.02%FS/10°C
Resistance(Ω)	385±10
Output Resistance(Ω)	350±3
Insulation Resistance	≥5000MΩ
Excitation Voltage	10V(DC/AC)
Compensated Temperature Range	-10°C~+50°C
Operating Temperature Range	-20°C~+60°C
Safe Overload	120%FS
Cable	Φ5.4×5m
Cable Color Code	
	Input: Red(+) Black(-); Output: Green(+) White(-)

## Main Dimensions and Accessories

Capacity		Size mm			Thread	
Klb	t	A	B	C	mm	inch
0.25-1.5	0.1-0.75	19.1	80.0	70.0	M12X1.75	1/2-20
2-3	1-1.5Se	25.4	80.0	70.0	M12X1.75	1/2-20
5-10	1.5Le-5	25.4	108.0	92.0	M18X1.5	3/4-16
15	7.5	32.0	140.0	100.0	M24X2	1-14
20	10	51.0	178.0	130.0	M30X2	1¼-12
40	20	60.0	190.0	160.0	M39X2	1½-12