



# JLG-SERIES CRANE SCALES 1 – 10 TON

Simple and effective Crane Scale for weighing hanging loads

## FEATURES:

- Freely swinging hook
- CE approved
- 30mm Red LED display
- Gross/Net weight display convertible
- Weight accumulation function
- Auto shut off
- Remote control calibration
- Auto zero tracking. HOLD function
- AC/DC power adaptor: output DC9V/1.5A
- One charging can be last up to 120 hours
- Infrared remote controller; distance: 10m
- Aluminium shell

## OPTIONS:

- Radio frequency repeater AC-01N
- Heat Insulation Board for steel water applications

## SPECIFICATIONS

**Weight accuracy:** As OIML III standard.

**Safe overload:** 120%F.S.

**Operating temp:** - 10°C ~ + 40°C

**Operating humidity:** <= 90%R.H.

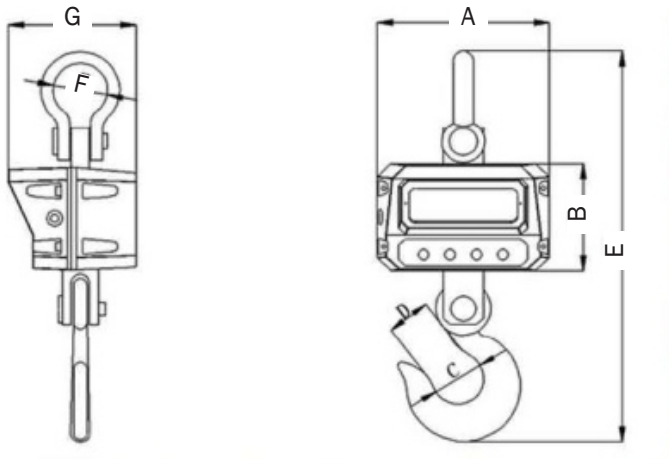
MODEL	JLG-600	JLG-1T	JLG-2T	JLG-3T	JLG-5T	JLG7,5T	JLG-10T
<b>Capacity</b>	0.6t	1t	2t	3t	5t	7.5t	10t
<b>Resolution</b>	0.2/0.1kg	0.5/0.2kg	1/0.5kg	1/0.5kg	2/1kg	5/2kg	5/2kg

	A	B	C	D	E	F	G
JLG-0.6T	250	165	50	50	575	87	194
JLG-1T	250	165	50	50	575	87	194
JLG-2T	250	165	50	50	575	87	194
JLG-3T	250	165	50	50	575	87	194
JLG-5T	250	165	60	63	615	89	194
JLG-10T	250	165	75	100	740	100	204
JLG-15T	250	165	82	100	940	137	214
JLG-20T	250	165	90	127	940	137	214

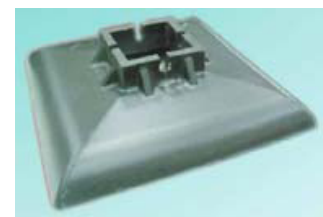
### MINIMUM SAFE DISTANCE BETWEEN SCALE AND STEEL WATER

TEMPERATURE OF STEEL WATER	SAFE DISTANCE
1000°C	1200mm
1200°C	1500mm
1400°C	1800mm
1600°C	2000mm

### DRAWINGS



AC-01N is a handheld RF Weighing Indicator with RS232 interface, can expand to connect Remote Indicator AC-02N, PC, dot matrix printer and label printer.



Hext Insulation Board



Remote Control is standard